

## Rivertrace Engineering Limited

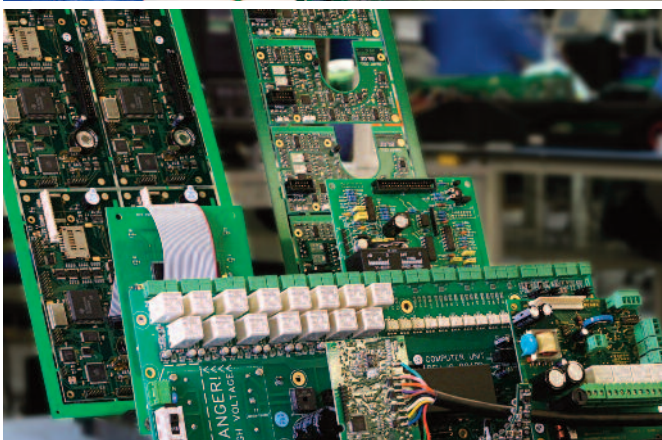
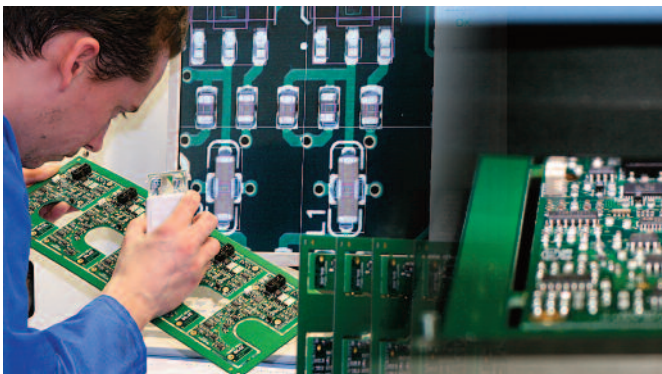
Over the last two years a strong working relationship has evolved between top management at Rivertrace and Printed Systems. This relationship has enabled the build up of the manufacturing activity in the UK by PSL on behalf of Rivertrace. A wide range of products are now being built here in Hertfordshire rather than offshore and this has provided Rivertrace with a continuation of supply that they have hitherto not been able to achieve.

Because of our special links to material suppliers PSL is able to offer Rivertrace an agreement which ensures that stocks of all their products are available at very short notice.

Also as part of the Rivertrace product launches at PSL the engineering team here has been able to provide design for manufacture recommendations that have enabled significant cost downs for our customer.

During our relatively short history with this customer PSL has been involved in for example:-

- **Material cost down exercises**
- **Design for manufacture review and implementation**
- **Pcb design**
- **Materials management**
- **Test verification**
- **Product design verification**



The range of Rivertrace products manufactured at PSL is set to increase during this year as worldwide environmental controls on pollution continue to require ever tighter monitoring of manufacturing and movement of potential pollutants.

[www.rivertrace.com](http://www.rivertrace.com)